

ADB 氣動增壓缸 氣動泵浦 單迴路 Air Pump . Single Circuit



Air Drive Booster

• Pmax:6kg/cm²

產品簡介

- 利用空氣壓驅動產生增壓，依增壓倍數輸出油壓壓力，作為驅動油壓缸之動力源，流量大於一般空油增壓器連續式輸出增壓流量，作動缸無增壓行程之限制。
- 以空氣調整閥調整壓力，達到增壓倍數即停止驅動，油壓壓降時將會自動驅動補償壓力，特別適用於長時間油壓夾持之場合，節省能源，不產生油溫，經濟又方便。
- A 型：安裝 ISO 規格油路板及電磁閥，適用於單動或雙動油壓缸。
- B 型：附配管座 P、T 孔，可連接油壓手動閥操作油壓夾持。
- 油箱體積小節省空間，容易安裝與保養。



Product Introduction

- The booster pump is driven by air to output hydraulic pressure for a power source for hydraulic cylinder. Its flow rate is bigger than that of a conventional booster. Continuous pressure boosting and no limitation of booster stroke for the acting cylinder.
- Pressure adjustment is made by an air pressure regulation valve. Once pressure reaches the desired value, drive stops immediately. In case pressure drops, the pump will compensate pressure automatically. The series is especially ideal for long time hydraulic clamping application. Also features energy saving, no oil temperature growth, economical and convenient.
- A Type: Equipped with ISO approved manifold and solenoid valve. Applicable for single-acting or double-acting hydraulic cylinder.
- B Type: Equipped with pipe block with P.T ports, permitting for connecting to a manual control valve for operation control.
- Reduced oil tank volume for space saving and convenient installation.

特性資料 Specification

使用流體	Fluid	已濾清之壓縮空氣 Filtered air						
最大操作壓力	Max operation pressure	6kg/cm ²						
增壓倍數	Boost pressure rate	06	10	13	16	25	44	
空氣供給	Air pressure supply	6kg/cm ²						
油壓吐出量	Hydraulic fluid expelled	l/min	15.1	10.8	9.1	6.5	4.9	3.2
油箱容量	Oil tank capacity	5 l						
使用液壓油	Oil	ISO-VG68						

訂購標示法 Order Code

ADB - 25 - A - 2B2 - AC110V - MBRV

① ② ③ ④ ⑤ ⑥

①	系列別 Series	ADB	
②	增壓倍數 Boost pressure rate	06, 10, 13, 16, 25, 44	
③	控制型式 Control type	A	ISO 規格油路板 Manifold, magnet valve
		B	配管座 P.T 孔 Distributing tube seat P.T. port
④	換向閥型式 Direction change valve type	單頭 Single Head : 2B2-02 雙頭 Double Head : 2D2-02, 3C2-02	
⑤	線圈型式 Coil type	AC110V, AC220V, DC24V	
⑥	減壓閥型號 The pressure reducing valve model	MBRV-02P	

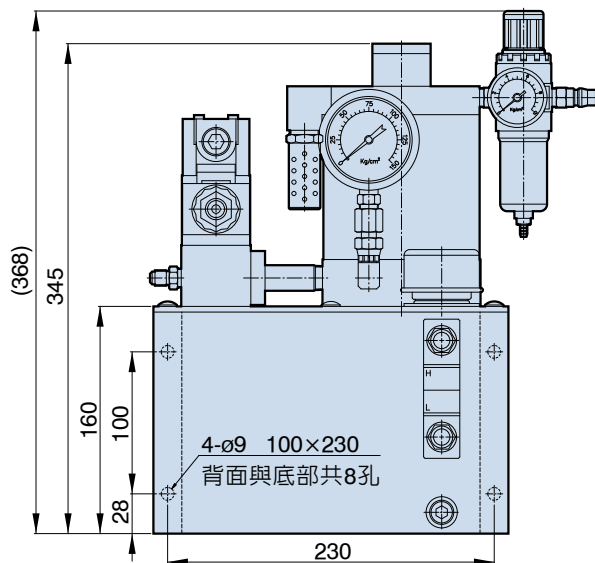
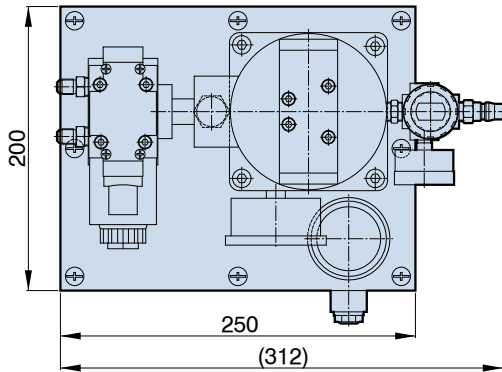
ADB 氣動增壓缸 氣動泵浦 單迴路

Air Pump . Single Circuit

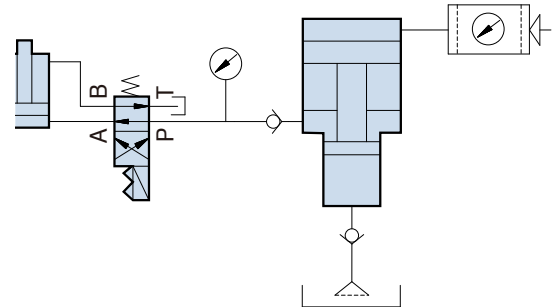


Air Drive Booster

• Pmax:6kg/cm²



迴路圖 Circuit diagram



注意事項

- 請使用 ISO-VG68 液壓油，油箱請加入適當油量再操作。
- 定期檢查液壓油的質量，以免影響正常運作與零件壽命。
- 氣動部份無法運作時，將氣動閥拆下不需分解，內部方向切換零件用氣槍清理。
- 氣壓缸鋁本体圓周上有一薄型銅消音器，如有粉塵異物吸入造成阻塞，將會阻礙氣壓缸活塞自動運作，必需拆下清理或換新。
- 氣動部份不停運作，油壓部份無法增壓，表示油封已損壞，造成內漏狀況。

Notice

- Use ISO-VG68 hydraulic oil. Be sure to fill proper amount of hydraulic oil into the oil tank before operation.
- Periodically inspect hydraulic oil quality to prevent affection on normal operation and parts life.
- In case air system can't work, remove the air valve but do not break down. Use an air gun to clean the internal direction change ports.
- There is a thin type bronze silencer on the aluminum body of air cylinder. If it is blocked by suction of powder dust, it may impede the motion of the piston of air cylinder. When such problem occurs, remove it for cleaning or replacing.
- If air system works continuously, but hydraulic pressure can't boost, it means oil seal is damaged causing internal leakage.