

HLB 槓桿油壓缸



Hydraulic lever-type Cylinder

• Bore: $\phi 25$ - $\phi 40$ mm • Pmax: 140kg/cm²

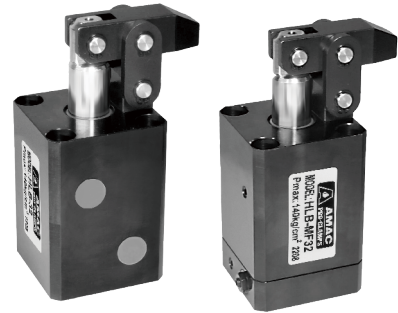
產品簡介

- 此型式油壓缸，夾持機構為槓桿原理，活塞推出為夾緊狀態，夾持力大於轉角缸，主要機構零件安裝，於缸體外部，易於維護。
- 缸體及夾持機構材料均採用機械構造用炭素鋼，堅固耐用，使用壽命長。
- 壓板：材質S45C 硬度HRC26°~30°



Product Introduction

- This type of hydraulic cylinder, the clamping mechanism is the lever principle, the piston is pushed out in a clamping state, the clamping force is greater than that of the corner cylinder, and the main mechanism parts are installed outside the cylinder body, which is easy to maintain.
- The cylinder barrel and clamping mechanism are manufactured from structural carbon steel for maximum durability and long service life.
- Clamping arm : material S45C hardness HRC26°~30°



特性資料 Specifications

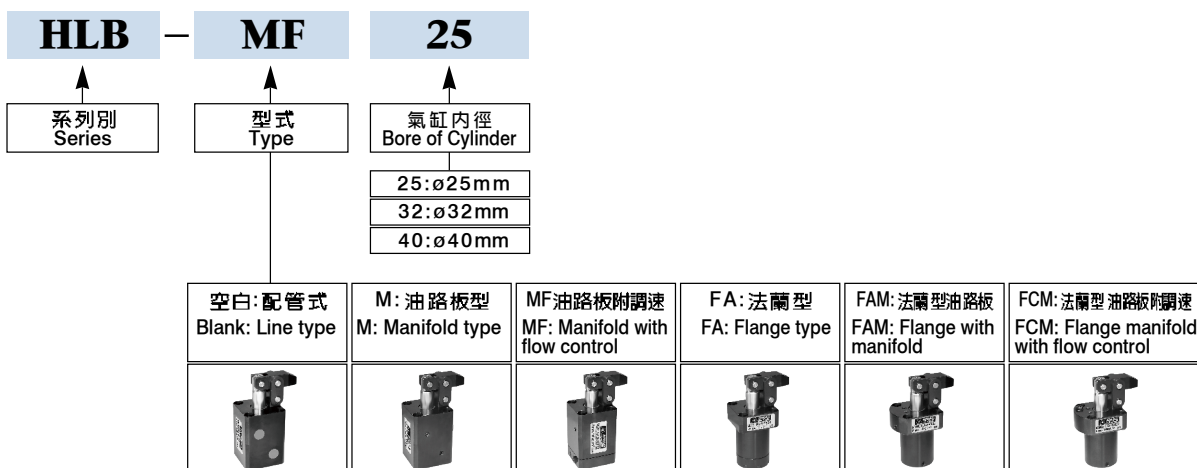
油缸內徑	Bore of cylinder	mm	$\phi 25$	$\phi 32$	$\phi 40$
活塞桿徑	Piston rod diameter	mm	$\phi 18$	$\phi 20$	$\phi 25$
總行程	Total stroke	mm	25	25	30
受壓面積 拉入/推出	Pressure area pull/push	cm ²	2.37 / 4.91	4.9 / 8.04	7.66 / 12.57
理論夾持力	Theoretical clamp	100kg/cm ²	388	635	955
使用流體	Fluid	已濾清之標準液壓油 Filtered hydraulic oil			
操作壓力範圍	Operation pressure range	5-140Kg/cm ²			
作動方式	Acting type	複動式 Double acting			

理論出力表 Clamping force

UNIT:Kg

油壓內徑 Bore of cylinder(mm)	受壓面積 Pressure area(cm ²)	G2/G3	操作壓力 Operation pressure(kg/cm ²)						
			30	40	50	75	100	125	140
$\phi 25$	4.91	0.79	116	155	194	291	388	485	543
$\phi 32$	8.04	0.79	191	254	318	476	635	794	889
$\phi 40$	12.57	0.76	287	382	478	716	955	1194	1337
$\phi 50$	19.63	0.77	453	605	756	—	—	—	—
$\phi 63$	31.17	0.75	701	935	1169	—	—	—	—

訂購標示法 Ordering Code



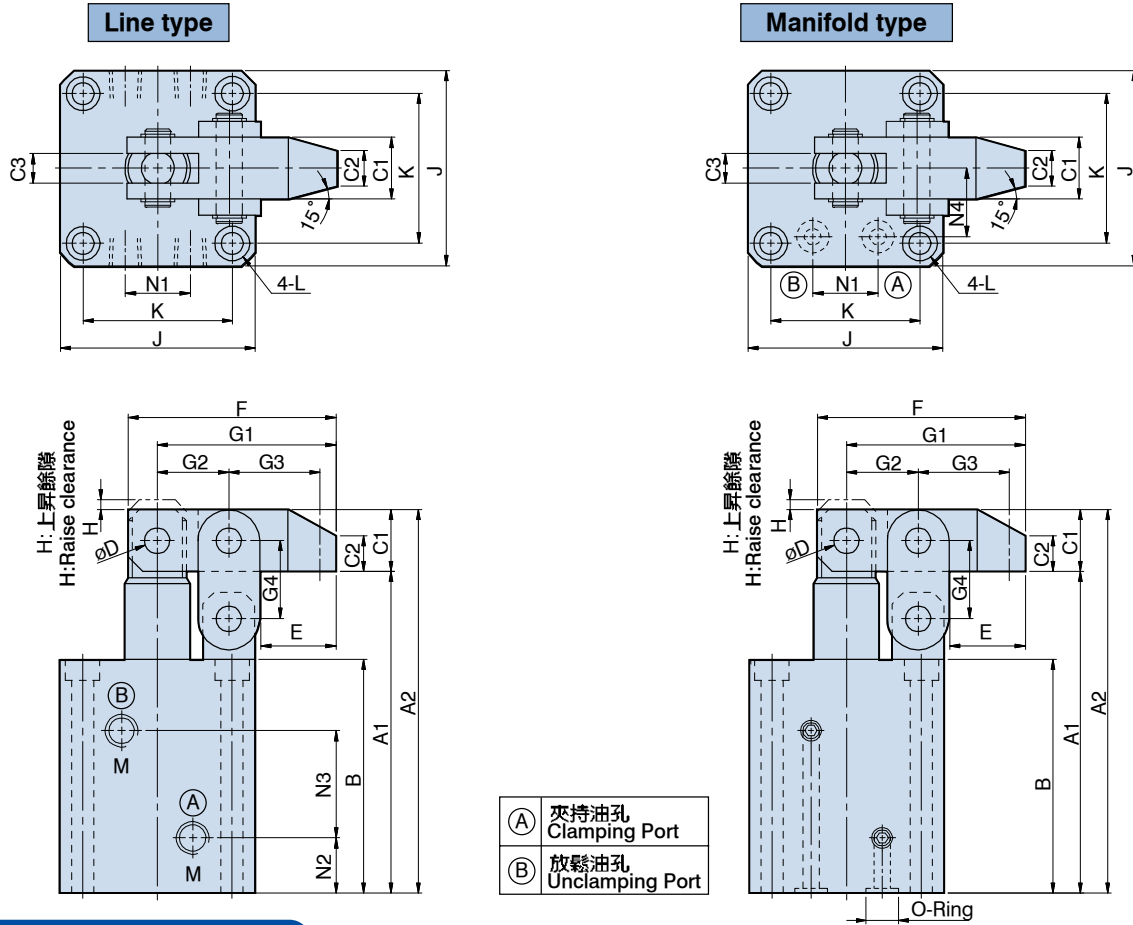
HLB 槓桿油壓缸

Line 配管式 / M 油路板型
Line type / Manifold



Hydraulic lever-type Cylinder

• Bore: $\phi 25\text{-}\phi 40\text{mm}$ • Pmax: 140kg/cm^2



Dimensional table

UNIT:mm

ITEM	MODEL	HLB-25 HLB-M25	HLB-32 HLB-M32	HLB-40 HLB-M40
A1		107	112	128
A2		126	131	150.2
B		80	85	96
C1		□19	□19	□22.2
C2		11	11	13
C3		9	9	10
ϕD		$\phi 8$	$\phi 8$	$\phi 10$
E		23.5	23.5	29
F		64	64	77
G1		55	55	66
G2		22	22	26
G3		28	28	34
G4		24	24	29
H		3	3	4
J		56	60	70
K		43	46	53
L		$\phi 6.8\text{-}\phi 10.5 \times 6.5\text{D.}$	$\phi 6.8\text{-}\phi 10.5 \times 6.5\text{D.}$	$\phi 9\text{-}\phi 14 \times 9\text{D.}$
M		PT1/8	PT1/8	PT1/4
N1		18	22	26
N2		19	21	22
N3		34	35	42
N4		20	22	26
O-Ring		P7	P7	P8

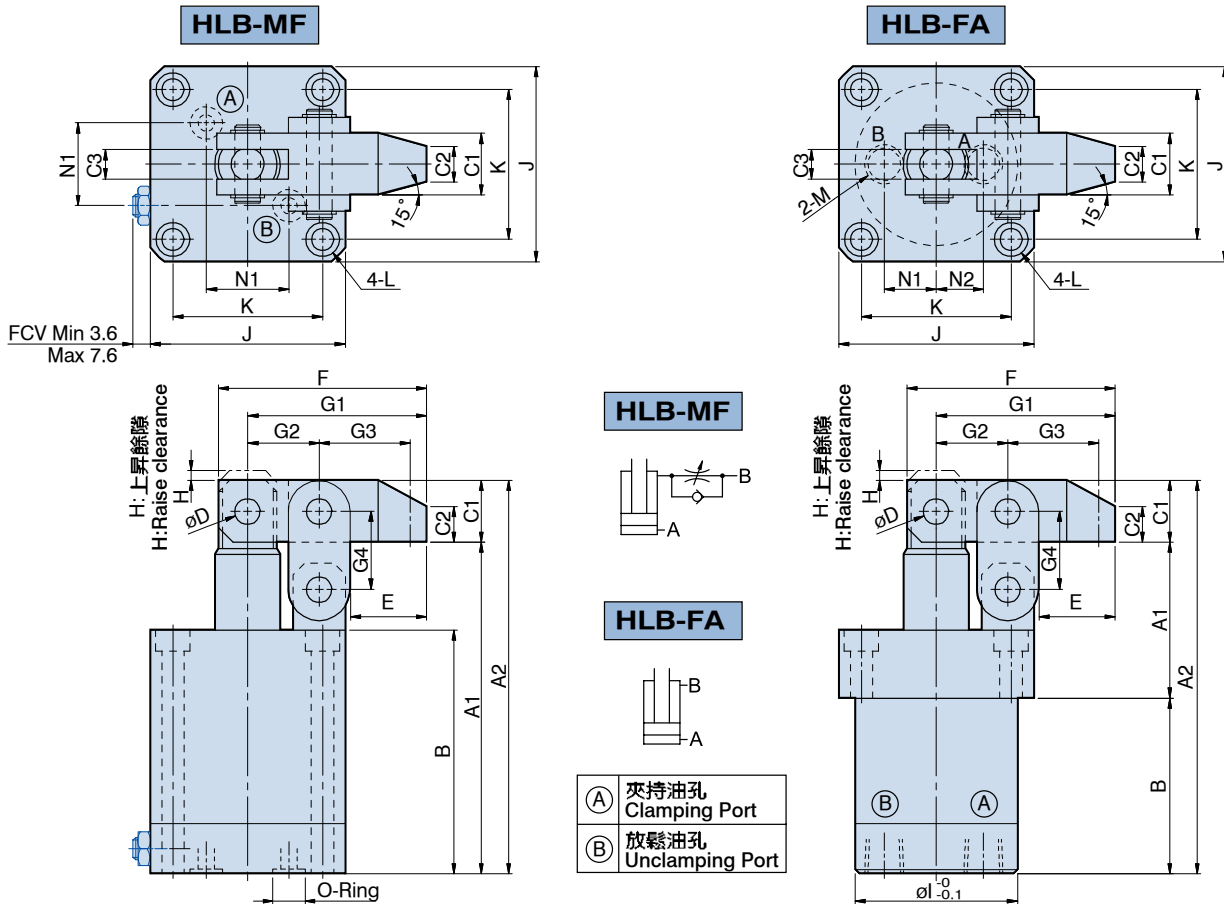
HLB 槓桿油壓缸 MF 油路板附調速 / FA 法蘭型

Manifold with flow control / Flange type



Hydraulic lever-type Cylinder

• Bore: $\phi 25\text{-}\phi 40\text{mm}$ • Pmax: 140kg/cm^2



Dimensional table

UNIT:mm

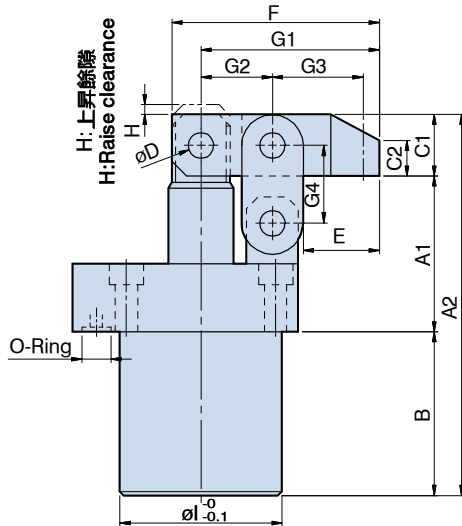
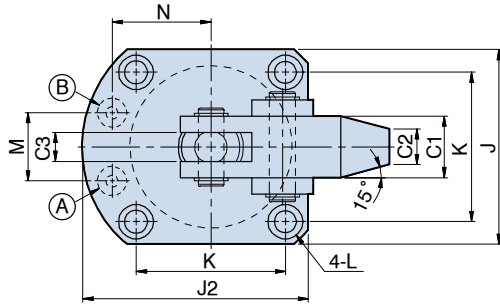
ITEM \ MODEL	MF25	MF32	MF40	FA25	FA32	FA40
A1	114	118	133	49	52	57
A2	133	137	155.2	133	137	155.2
B	87	91	101	65	66	76
C1	$\square 19$	$\square 19$	$\square 22.2$	$\square 19$	$\square 19$	$\square 22.2$
C2	11	11	13	11	11	13
C3	9	9	10	9	9	10
ϕD	$\phi 8$	$\phi 8$	$\phi 10$	$\phi 8$	$\phi 8$	$\phi 10$
E	23.5	23.5	29	23.5	23.5	29
F	64	64	77	64	64	77
G1	55	55	66	55	55	66
G2	22	22	26	22	22	26
G3	28	28	34	28	28	34
G4	24	24	29	24	24	29
H	3	3	4	3	3	4
ϕl	—	—	—	$\phi 45$	$\phi 50$	$\phi 58$
J	56	60	70	56	60	70
K	43	46	53	43	46	53
L	$\phi 6.8\text{-}\phi 10.5 \times 6.5\text{D.}$	$\phi 6.8\text{-}\phi 10.5 \times 6.5\text{D.}$	$\phi 9\text{-}\phi 14 \times 9\text{D.}$	$\phi 6.8\text{-}\phi 10.5 \times 6.5\text{D.}$	$\phi 6.8\text{-}\phi 10.5 \times 6.5\text{D.}$	$\phi 9\text{-}\phi 14 \times 9\text{D.}$
M	—	—	—	PT1/4	PT1/4	PT1/4
N1	19	21	23	12.5	16	20
N2	—	—	—	12.5	14.5	17.5
O-Ring	P7	P7	P9	—	—	—

HLB 槓桿油壓缸 FAM 法蘭型油路板 Flange with manifold

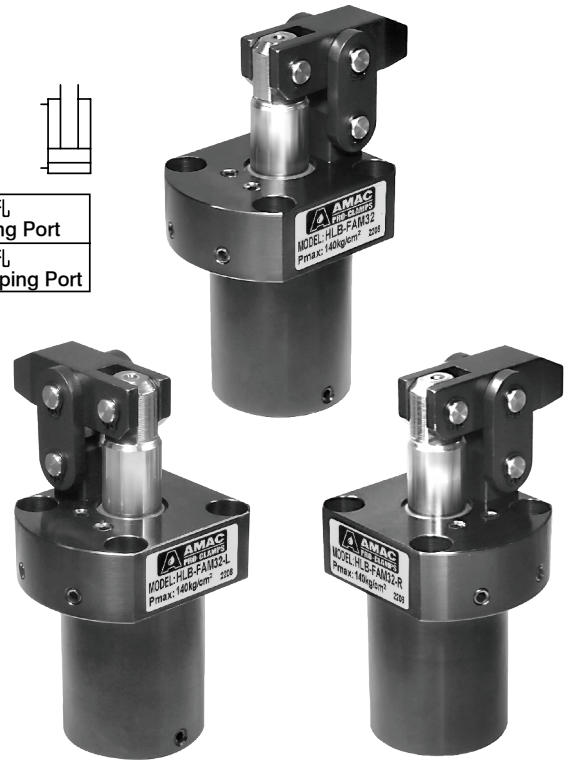


Hydraulic lever-type Cylinder

• Bore: $\phi 25$ - $\phi 40$ mm • Pmax: 140kg/cm²



- Ⓐ 夾持油孔
Clamping Port
- Ⓑ 放鬆油孔
Unclamping Port



HLB-FAM Bore -L

HLB-FAM Bore -R

Dimensional table

UNIT:mm

ITEM \ MODEL	HLB-FAM25	HLB-FAM32	HLB-FAM40
A1	49	52	57
A2	126	131	150.2
B	58	60	71
C1	□19	□19	□22.2
C2	11	11	13
C3	9	9	10
øD	ø8	ø8	ø10
E	23.5	23.5	29
F	64	64	77
G1	55	55	66
G2	22	22	26
G3	28	28	34
G4	24	24	29
H	3	3	4
øl	ø45	ø50	ø58
J1	56	60	70
J2	65	69.5	81
K	43	46	53
L	ø6.8-ø10.5x6.5D.	ø6.8-ø10.5x6.5D.	ø9-ø14x9D.
M	20	21	27
N	28	30.5	35
O-Ring	P6	P6	P9

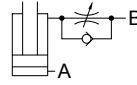
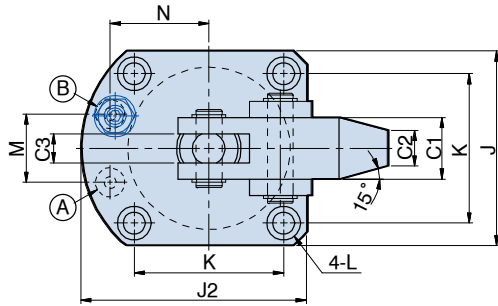
HLB 槓桿油壓缸 FCM 法蘭型油路板附調速

Flange type manifold with flow control

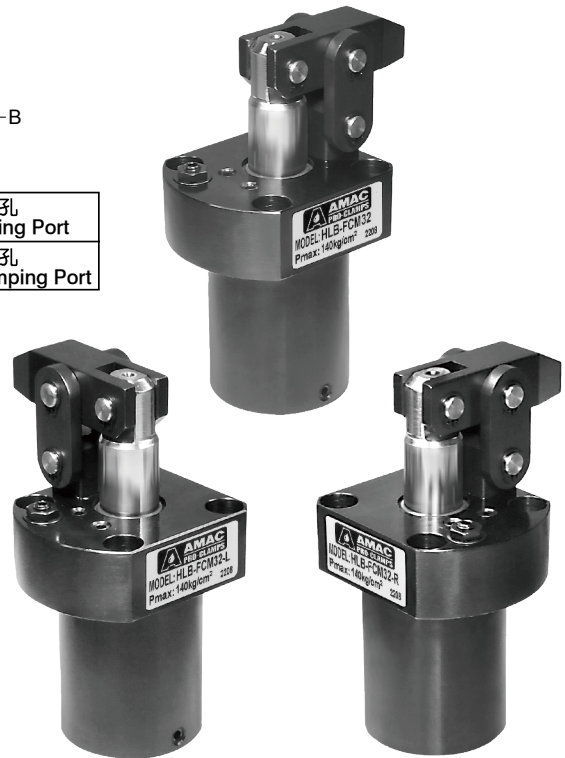
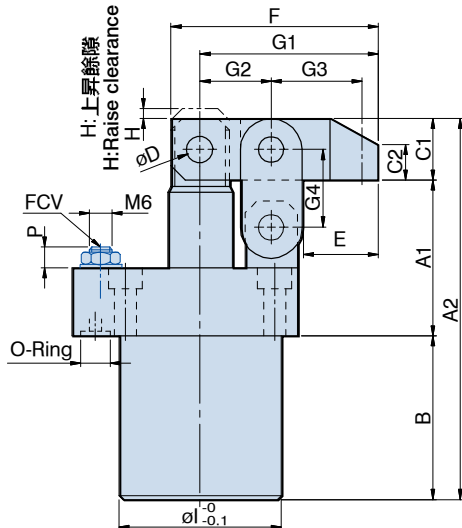


Hydraulic lever-type Cylinder

• Bore: $\phi 25$ - $\phi 40$ mm • Pmax: 140kg/cm²



- (A) 夾持油孔
Clamping Port
- (B) 放鬆油孔
Unclamping Port



HLB-FCM Bore-L

HLB-FCM Bore-R

Dimensional table

UNIT:mm

ITEM	MODEL	HLB-FCM25	HLB-FCM32	HLB-FCM40
A1		49	52	57
A2		126	131	150.2
B		58	60	71
C1		□19	□19	□22.2
C2		11	11	13
C3		9	9	10
ϕD		$\phi 8$	$\phi 8$	$\phi 10$
E		23.5	23.5	29
F		64	64	77
G1		55	55	66
G2		22	22	26
G3		28	28	34
G4		24	24	29
H		3	3	4
ϕI		$\phi 45$	$\phi 50$	$\phi 58$
J1		56	60	70
J2		65	69.5	81
K		43	46	53
L		$\phi 6.8$ - $\phi 10.5$ x6.5D.	$\phi 6.8$ - $\phi 10.5$ x6.5D.	$\phi 9$ - $\phi 14$ x9D.
M		20	21	27
N		28	30.5	35
O-Ring		P6	P6	P9
P Min.		7.1	4.1	4.1
P Max.		10.2	8.1	8.1