

# HLC 槓桿油壓缸 MF 油路板附調速

Manifold with flow control

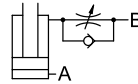
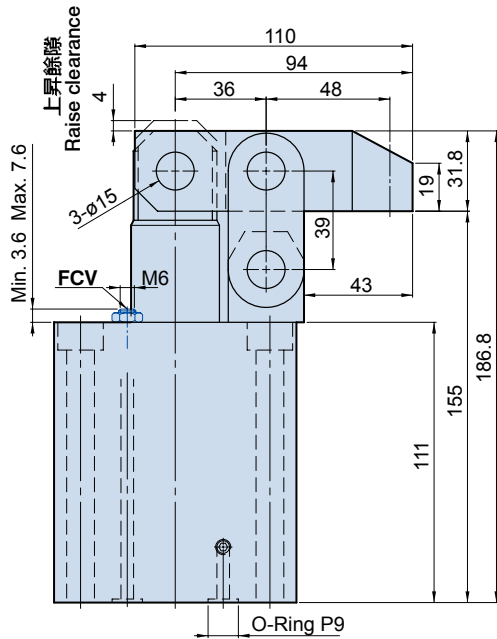
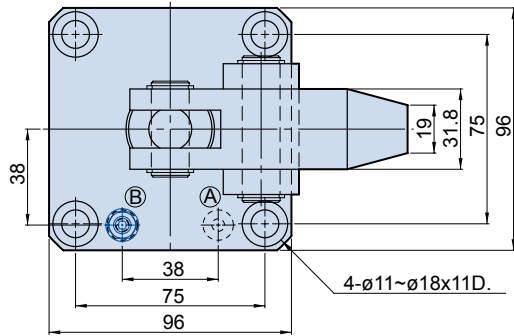


## Hydraulic lever-type Cylinder MF

• Bore:  $\phi 63\text{mm}$

• Pmax:  $70\text{kg/cm}^2$

HLC-MF63



Ⓐ	夾持油孔 Clamping Port
Ⓑ	放鬆油孔 Unclamping Port

